



COMMERCIAL FRENCH FRY CUTTER #825



CARE:

1. Thoroughly wash and rinse the unit with hot soapy water before use.
2. For best results, DO NOT put unit in dishwasher.

CAUTION:

1. KEEP OUT OF REACH OF CHILDREN. The blades are very sharp.
2. When cutting fibrous vegetables such as yams, sweet potatoes and onions, use the large blade. Use a firm, quick pushing motion to move the vegetables through the blades. Repeat as needed until the produce is through the blades.
3. To produce the best strips, use fresh, firm fruits and vegetables such as carrots, cucumbers, zucchini, apples, yams, sweet potatoes, onions, white, red and yellow potatoes.

USE:

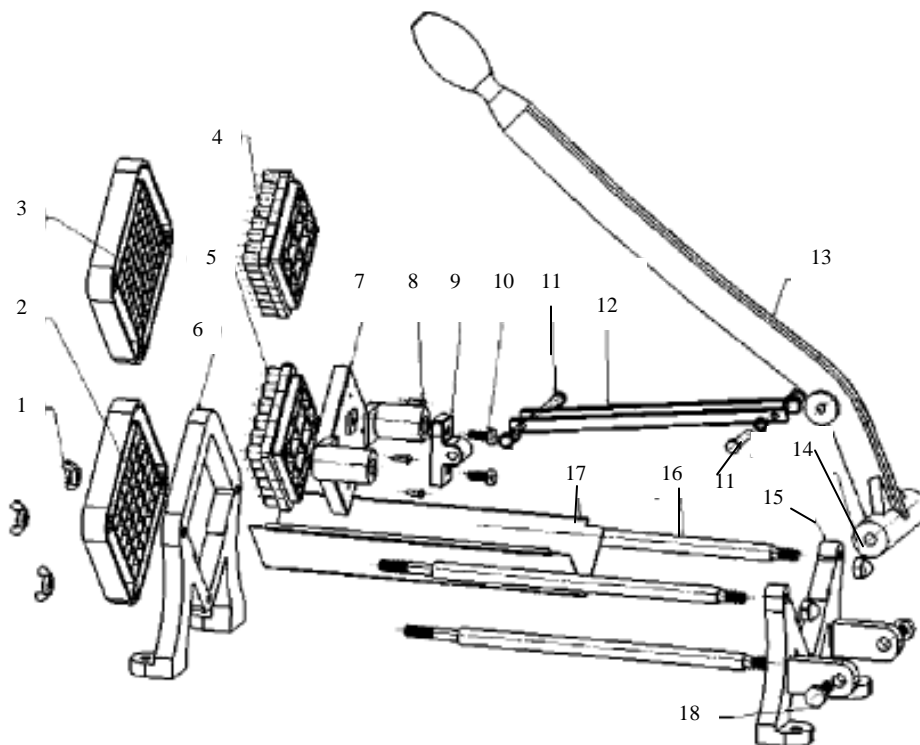
1. To change the blade, remove the three WING NUTS (#1) on the front of the CUTTING PLATE (#2 or #3) FRONT STAND (#6).
2. Place the alternate blade on the unit and replace the wing nuts.
3. To change the PUSH PLATE (#4 or #5), remove the two THUMB SCREWS and WASHERS (#8) from the PUSH PLATE BASE (#7) and mount the alternate plate in place. Replace screws.
4. The unit can be mounted to a sturdy surface of wall.

OPTIONAL: To install Suction Cup Feet Kit (#19) place the bolt of each suction cup through the holes in the feet of the cutter. Thread the nylock nut onto each bolt tightly. Press firmly down on the French Fry Cutter to create suction between the surface and the cutter. Suction cups work best on smooth, horizontal surfaces. To create more suction, a damp cloth can be swiped across the suction cup prior to adhering. Check stability of the cutter prior to using. **NOTE:** The suction cups are not meant to be used on a vertical surface. Use the suction cups for horizontal mounting purposes only.



Commercial French Fry Cutter Parts List #825

PART #	DESCRIPTION	QTY	PART #	DESCRIPTION	QTY
1	WING NUT	3	11	PUSH ROD BOLT	2
2	1/2" CUTTING PLATE WITH FRAME	1	12	PUSH ROD	2
3	3/8" CUTTING PLATE WITH FRAME	1	13	HANDLE	1
4	3/8" PUSH PLATE	1	14	GUIDE ROD NUT	3
5	1/2" PUSH PLATE	1	15	BACK STAND	1
6	FRONT STAND	1	16	GUIDE ROD	3
7	PUSH PLATE BASE	1	17	BASE	1
8	THUMB SCREW WITH WASHER	2	18	HANDLE BOLT & NUT	1
9	PUSH ROD MOUNT	1	19	SUCTION CUP FEET (not shown)	4
10	PUSH ROD MOUNT SCREW	2			



**1 YEAR WARRANTY COVERS PARTS AND LABOR ONLY
RETURN FREIGHT IS THE RESPONSIBILITY OF THE PURCHASER**

**LEM Products
109 May Drive, Harrison, OH 45030 • 877-536-7763 • www.lemproducts.com**